

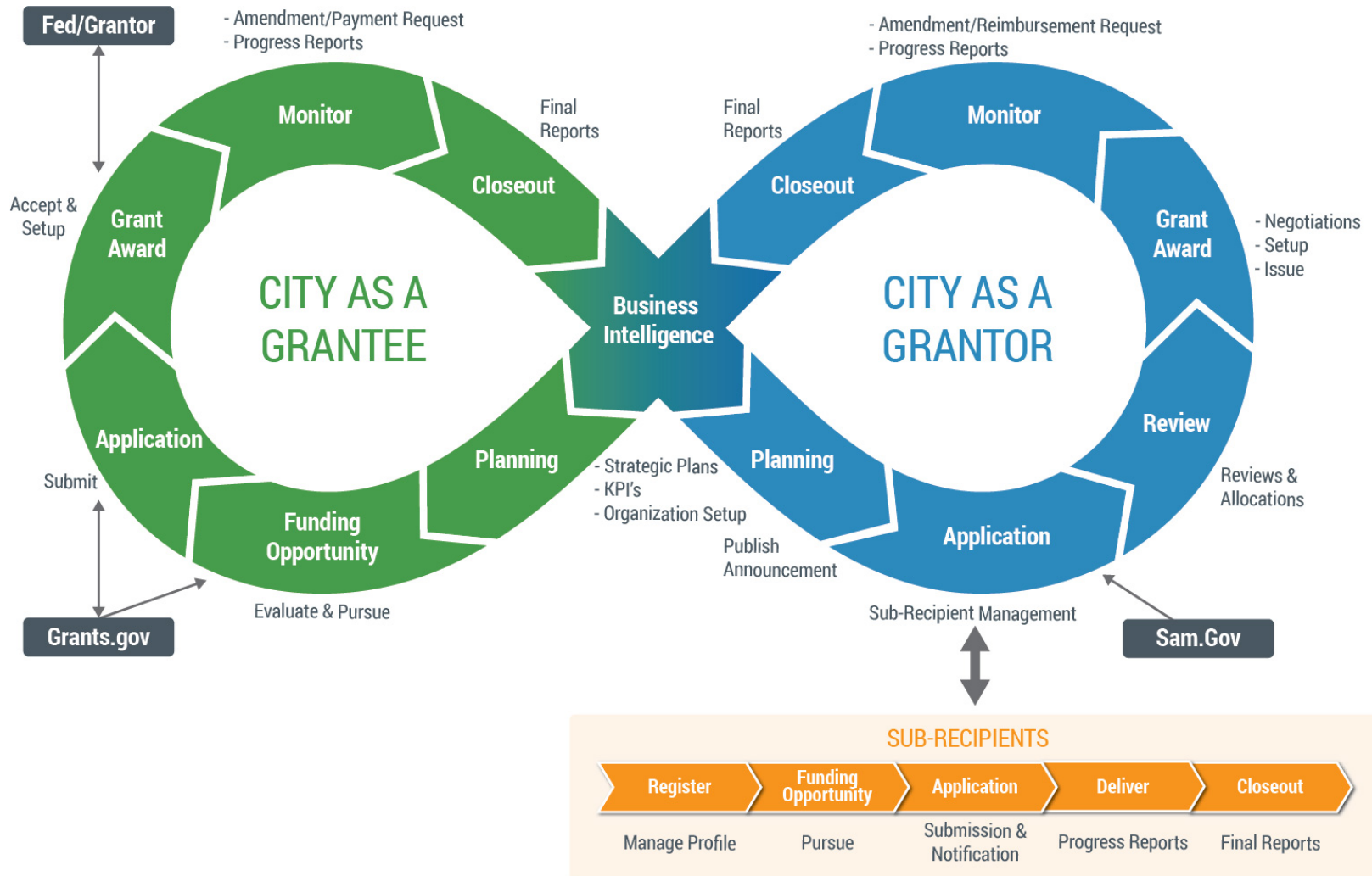


# The Future of Grants Management

DC's Grants Management Modernization Initiative



# The District Plays Multiple Grant Roles



# But Agencies May Face Similar Challenges

## Common “As a Grantee” Challenges:



Ad hoc tracking of opportunities and funding pipeline



Inability to ensure compliance with grant terms and conditions



Lack of collaboration between offices, bureaus, and agencies leads to internal competition



Difficulty responding and adhering to Federal reporting requirements e.g., SF-425



Sub-optimal, costly pursuit of low value funding opportunities



Inconsistent governance and risk management processes

# ... Across Roles and Grant Programs

## Common "As a Grantor" Challenges:



Limited visibility into actual grant performance and outcomes



Difficulty tracking recipient compliance with terms and conditions



Lack of real-time reporting tools and data



Numerous errors and inefficiencies due to manual business processes and paper-based forms



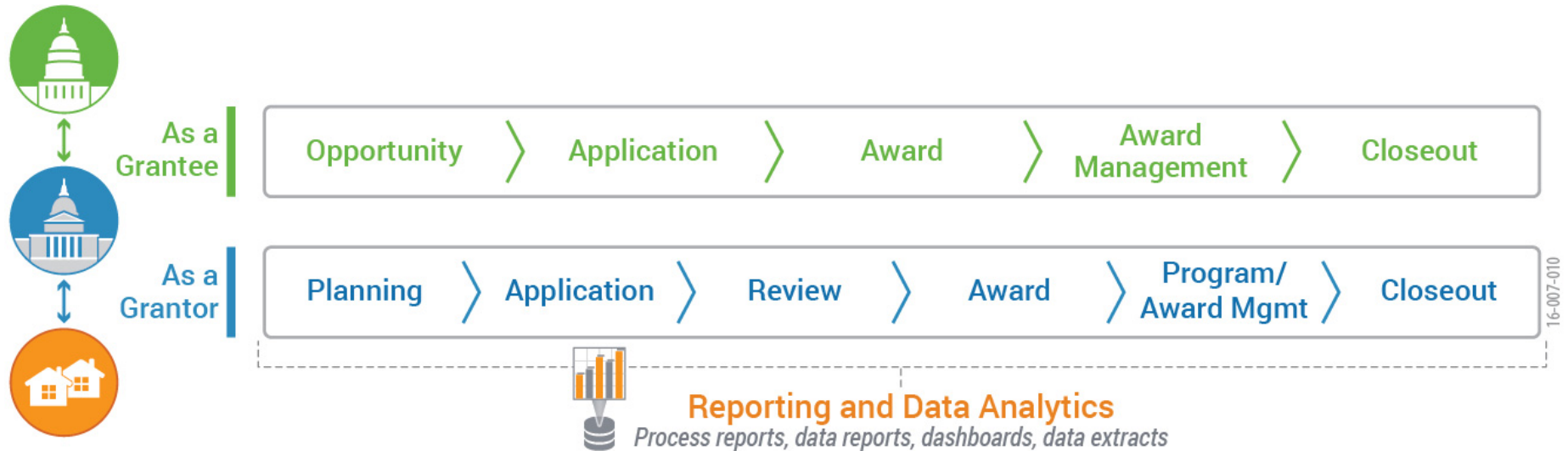
Poor collaboration and sharing between recipients and Grants Staff



Fraud and waste given inability to effectively manage recipient risk

# A Path Forward: Centralized Grants System

**GEMS:** A single, shared system for receiving and disbursing grant funds across the grants management life-cycle



# Multiple Constituencies Need a GEMS



**Executives & Leadership**



**Fiscal Managers & Staff**



**Program Managers & Staff**



**Admins, Auditors & IT**



**Applicants & Sub-Recipients**

## Focus

- |   |  |  |  |   |
|---|--|--|--|---|
| <ul style="list-style-type: none"> <li>▪ Visibility of impact of funds</li> <li>▪ Driving results</li> <li>▪ Touting successes</li> </ul> | <ul style="list-style-type: none"> <li>▪ Compliance and risk</li> <li>▪ Financial progress</li> <li>▪ Accuracy of financial reports</li> </ul> | <ul style="list-style-type: none"> <li>▪ Mission outcomes</li> <li>▪ Recipient satisfaction</li> <li>▪ Performance management</li> </ul> | <ul style="list-style-type: none"> <li>▪ Easy operations</li> <li>▪ Compliance</li> <li>▪ Quick Verifications</li> </ul> | <ul style="list-style-type: none"> <li>▪ Funding for mission</li> <li>▪ Central / common point of engagement</li> <li>▪ Self Service</li> </ul> |
|---|--|--|--|---|

## Challenges

- |  |  |  |   |   |
|--|--|--|---|---|
| <ul style="list-style-type: none"> <li>▪ Inability to mitigate risks</li> <li>▪ Poor governance</li> <li>▪ Inefficiencies and waste</li> </ul> | <ul style="list-style-type: none"> <li>▪ Multiple systems</li> <li>▪ Substantial manual data entry</li> <li>▪ Poor data quality</li> </ul> | <ul style="list-style-type: none"> <li>▪ Manual processes</li> <li>▪ Lack of collaboration</li> <li>▪ Poor data quality</li> </ul> | <ul style="list-style-type: none"> <li>▪ Manual processes</li> <li>▪ Lack of evidence</li> <li>▪ Email dependent</li> </ul> | <ul style="list-style-type: none"> <li>▪ Manual processes</li> <li>▪ Lack of collaboration</li> <li>▪ Different processes for different agencies</li> </ul> |
|--|--|--|---|---|

## Needs

- |  |   |  |   |  |
|--|---|--|---|--|
| <ul style="list-style-type: none"> <li>▪ Grants business intelligence</li> <li>▪ Ability to share successes</li> </ul> | <ul style="list-style-type: none"> <li>▪ Tools that support compliance</li> <li>▪ Integration with ERP</li> </ul> | <ul style="list-style-type: none"> <li>▪ Single source of grants data</li> <li>▪ Ability to track grants easily</li> </ul> | <ul style="list-style-type: none"> <li>▪ Single source of truth</li> <li>▪ Fraud &amp; abuse detection</li> </ul> | <ul style="list-style-type: none"> <li>▪ Easy &amp; intuitive UI</li> <li>▪ Simple processes</li> <li>▪ Quick access to funding</li> </ul> |
|--|---|--|---|--|



# REI Supports a Number of GEMS Projects



**Ohio**

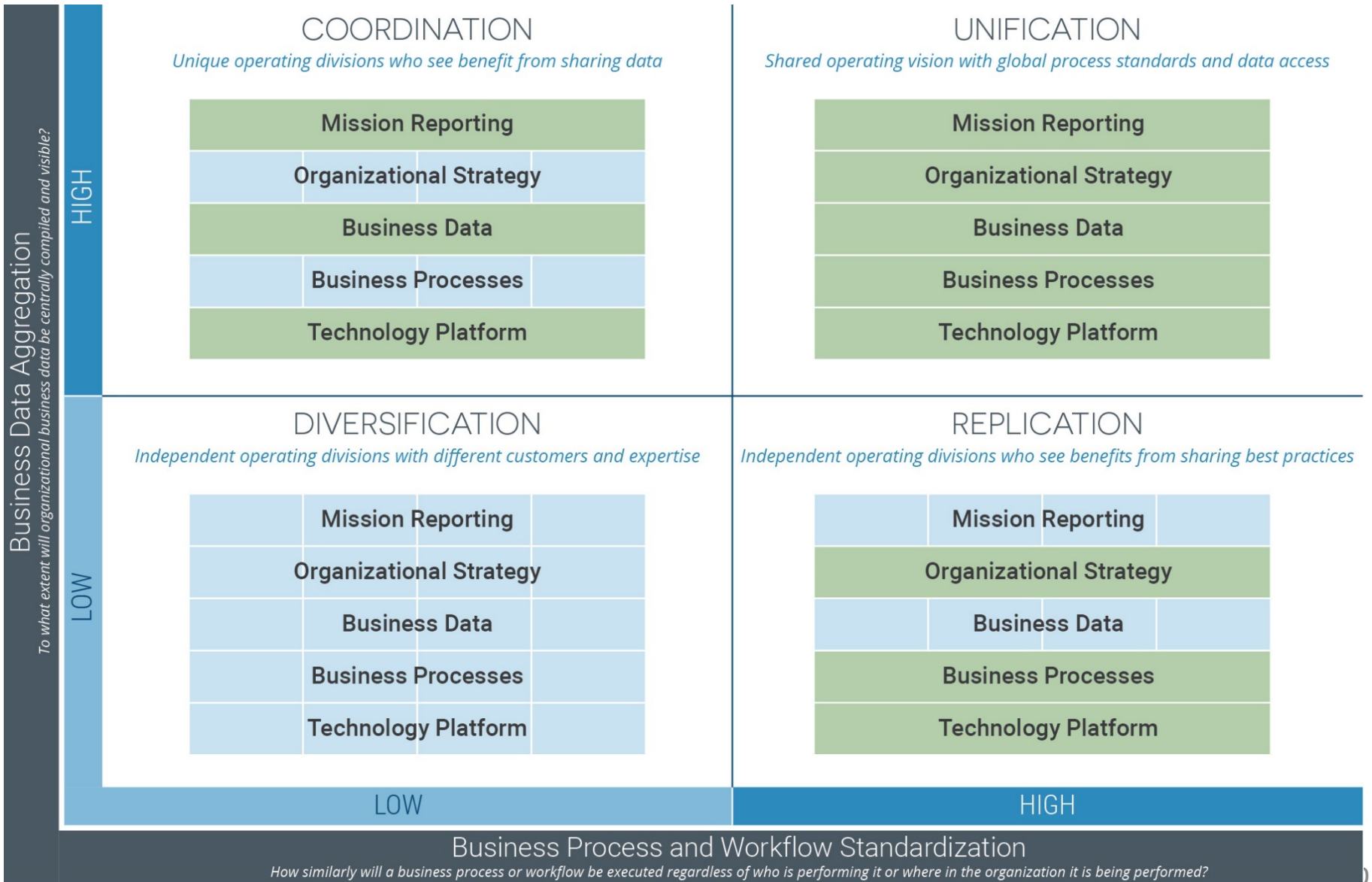
The State of Perfect Balance



## Objectives:

- Introduce concept of GEMS to City grants community in the context of agencies and OCFO
- Discuss challenges – both technical and behavioral – associated with a GEMS deployment
- Explore desired outcomes and benefits from a new City-wide grants management system

# GEMS Framework for Consideration



# Key Capabilities of a GEMS for DC

 	Performance Management and Tracking	 	Native Interfaces with Third-Party Systems
 	Single Centralized Data Repository	 	Up-to-Date With New Regulations and Business Changes
 	Business Intelligence and Automated Reporting	 	Fraud, Waste, and Abuse Monitoring
 	Business Process and Rules-Driven Workflows	 	Accessible Anytime, Anywhere via Mobile
 	Ease of Configuration Without IT Support	 	In-Context Collaboration and Sharing



**Wagish Bhartiya**

703.480.9194

[Wagish.Bhartiya@reisystems.com](mailto:Wagish.Bhartiya@reisystems.com)

**Steve Lancaster**

571.262.5250

[SLancaster@reisystems.com](mailto:SLancaster@reisystems.com)

## REI Systems

Achieving Excellence Together